

# *WinAlign<sup>®</sup> Alignment Systems*

*with HawkEye<sup>®</sup> Sensors*



*Greater profit and productivity through innovation*

**HUNTER**  
Engineering Company

# Alignment as easy as 1-2-3!

WinAlign® alignment systems fully integrate the functions of the console, HawkEye® sensors and lift into one highly efficient alignment system.

A series of automated features and intuitive software tools save time and simplify procedures to make alignment as easy as...

step

1

## Select the vehicle



- ✓ Recall specs

step

2

## Measure angles



- ✓ Install targets
- ✓ Capture measurements in 40 seconds
- ✓ Review "before" results

step

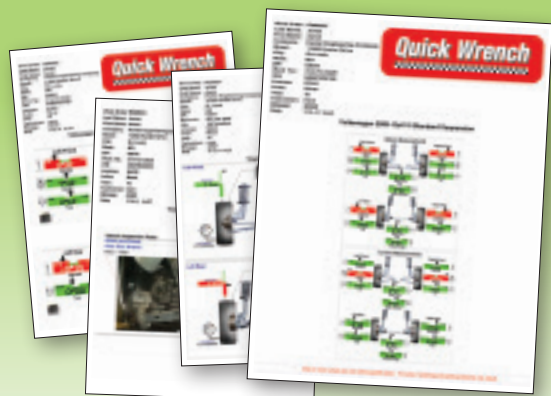
3

## Make adjustments



- ✓ Follow the adjustment instructions
- ✓ Print before-and-after results

## Present your results!



- ✓ Sell more alignments
- ✓ Generate greater profits

# Hunter's latest productivity features!

**NEW!**

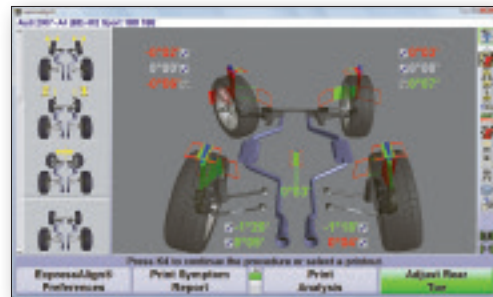


## OPTIONAL



### Inflation and no gauges!

Set and record tire pressure automatically without cumbersome hoses and gauges.



### Simplified adjustments!

Intuitive software features guide every adjustment.



### Easy access targets!

Store targets within arm's reach of each wheel for maximum productivity.

## OPTIONAL



### Patented steering system reset integration!

Reset computerized steering systems on a wide variety of vehicles with one simple tool.



### High-resolution cameras!

Four high-resolution cameras provide alignment measurements with pinpoint accuracy.

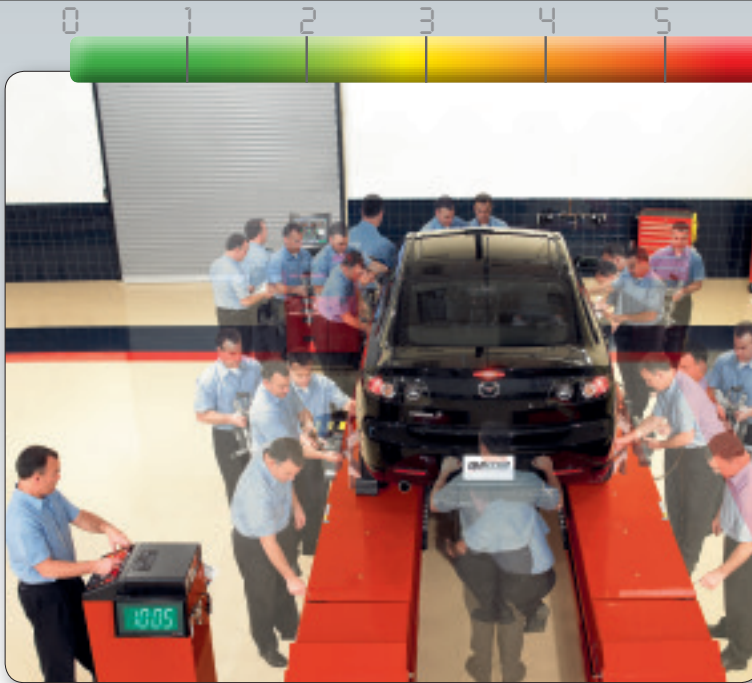


### No more lock-pin hassles!

Forget pulling and replacing lock pins by hand.

# Previous setups used valuable shop time...

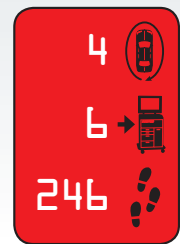
## Conventional electronic-sensor system – 10-minute plus procedure



- ✓ Chock wheels and lift vehicle
- ✓ Jack up front and rear of vehicle
- ✓ Check air pressure and recall specs
- ✓ Mount all 4 sensors, compensate each wheel, and remove pins
- ✓ Lower rear and front of vehicle and jounce
- ✓ Steer to measure caster
- ✓ Print results

10:00

ACTIVITY TRACKER



Older technology requires long set-up times...

**10:05 Total**

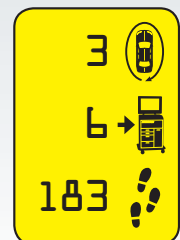
## Camera-sensor systems speed up the process



- ✓ Chock wheels and lift vehicle
- ✓ Check air pressure and recall specs
- ✓ Mount targets
- ✓ Roll to compensate
- ✓ Remove pins
- ✓ Steer to measure caster
- ✓ Print results

4:00

ACTIVITY TRACKER



Early camera technology improves efficiency...

**4:00 Total**

***...Today, present your results in just 2 minutes!***



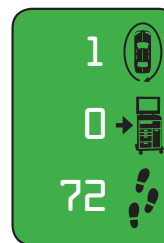
***Hunter's WinAlign alignment systems with HawkEye sensors and Premium RX Lifts produce measurements in 2 minutes!***

**Hunter's 2-minute procedure**

- ✓ Chock wheels and lift vehicle to work height
- ✓ Mount targets and set air pressure
- ✓ Roll to compensate
- ✓ Recall specs and perform enhanced caster steer procedure
- ✓ Vehicle results print automatically

***2:03 Total***

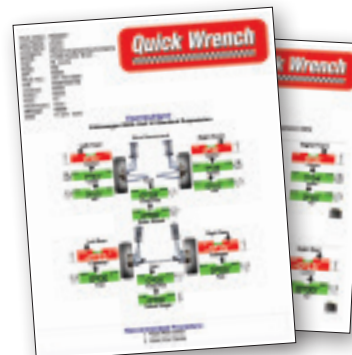
**ACTIVITY TRACKER**



trip around the vehicle

trips to the console

total walking steps



**Fast printouts in 2 minutes!**

Use detailed printouts featuring your company's logo to sell more work.

# When it comes to award-winning software, WinAlign® alignment systems are unmatched!

## The importance of software...



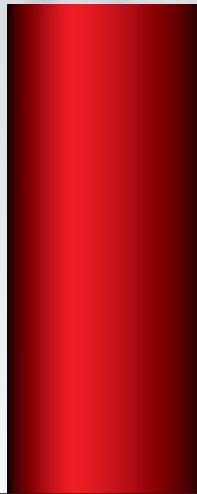
Over 30 years of experience and the largest R&D department in the undercar industry bring you the most profitable and productive software on the market.



Ordinary systems simply present alignment readings



Ordinary camera systems simply speed up these readings



WinAlign alignment systems maximize profit and productivity in your alignment bay

- ▶ The **most extensive** vehicle information database.
- ▶ **Vehicle-specific** procedures guide your technicians with step-by-step instructions.
- ▶ **Patented and award-winning power tools** complete the work accurately the first time, every time.
- ▶ **WinAlign alignment systems maximize profit and productivity in your alignment bay.**



### ExpressAlign®

Perform every alignment with a streamlined procedure. ExpressAlign analyzes each job and presents the optimal action sequence with the minimum steps required.



### WinToe®

Ensure a straight steering wheel every time without repeated adjustments or using a steering wheel holder.

**A time-saver on nearly every alignment.**

**PATENTED**



### Tools and Kits Database

Save trips back and forth to the tool box. Hunter presents all of the tools and aftermarket correction kits needed for each alignment

**PATENTED**



### Virtual View®

Picture your alignment job in 3-D using real-time 3-D models. Used by experts and novices alike.

**Every alignment can be shown in 3-D.**

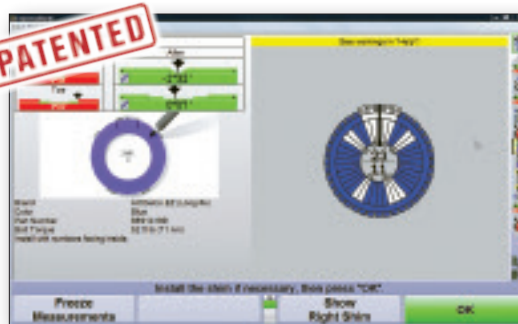
**PATENTED**



### Control Arm Movement Monitor®

Cut adjustment times in half for front-shim, dual-cam or dual-slot vehicles. Step-by-step graphics let you get it right on the first try.

**PATENTED**



### Shim-Select® II

Eliminate confusing shim charts and tables. Shim Select II quickly calculates and displays the template you need for proper shim installation.

**PATENTED**



### Wheel-Off Adjustment

Speed the alignment process by making adjustments with the wheel removed.\*

**Available when you need it.**

**PATENTED**



### Automatic Bushing Calculator®

Calculate the proper bushing size and position adjustment without wasting time with a zero bushing.

\* Requires Wheel-Off Adjustment Kit 20-1978-1

# CodeLink® – The new last step in alignment service

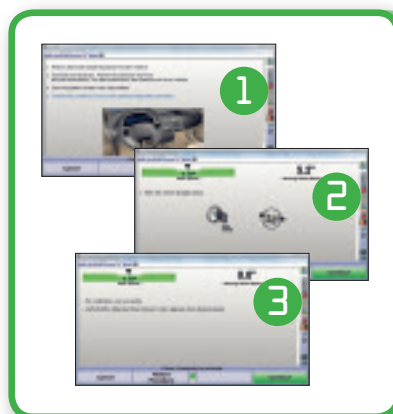
CodeLink® directly "links" the vehicle OBD-II to the aligner to reset steering system sensors, as required by the manufacturer.

## Simple and efficient

- ✓ Automatically identifies candidate vehicles
- ✓ Incorporates reset steps into the alignment
- ✓ Uses aligner screen to display instructions
- ✓ Updates automatically with system software upgrades
- ✓ Dedicated alignment tool



**One tool replaces multiple OEM scan tools**



**Simplified reset instructions replace confusing OEM procedures**

## Finishes the job right

- ✓ No other reset tool matches CodeLink's patented integration with the alignment procedure
- ✓ Guarantees precision with exact steering system sensor thresholds
- ✓ Reduces errors that result in customer comebacks

**Printed documentation confirms that steering system reset was completed properly**





# Industry leaders recommend Hunter



## TouchRemote™ feature for Apple® iPhone®, iPod touch® and iPad® users

**OPTIONAL**



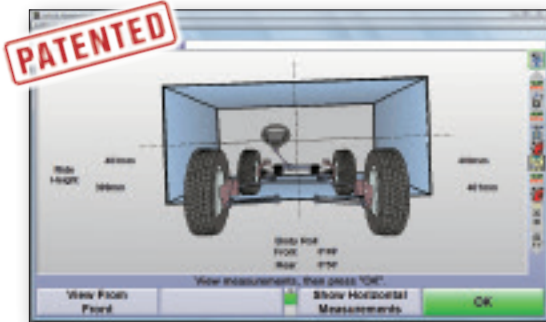
Hunter's new TouchRemote feature allows users of popular Apple iPhone, iPod touch and iPad devices to enjoy full wireless remote operation of WinAlign® alignment systems.

- ✓ Allows users to view live vehicle measurements.
- ✓ Full control over WinAlign software features.
- ✓ Vehicle-specific adjustment illustrations and digital images.

*Optional on WinAlign consoles running WinAlign version 11.1 software by purchasing TouchRemote kit 20-2477-1 and a wireless network kit 20-2195-1. TouchRemote requires a free app from iTunes® (search for "Hunter TouchRemote"). Requires Apple iPhone, iPod touch or iPad. Sold separately.*

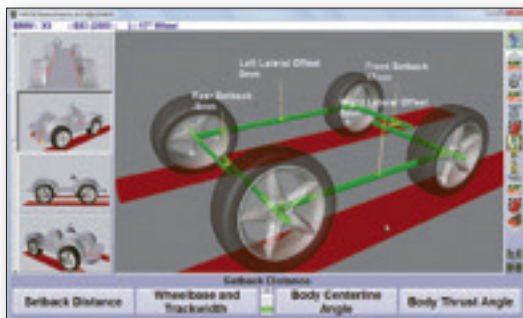
# Take your alignment business to the next level!

## Perform body shop alignments...



### Suspension Body Dimension Audit

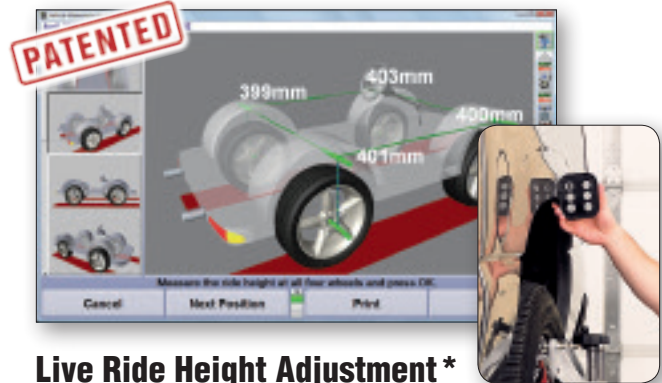
Quickly screen vehicles to determine alignability and collision repair needs.



### Symmetry Angle Measurements

Instantly access symmetry angles and setback for your body shop customers.

## Perform specialty alignments...



### Live Ride Height Adjustment\*

Measure and adjust ride height in real-time.

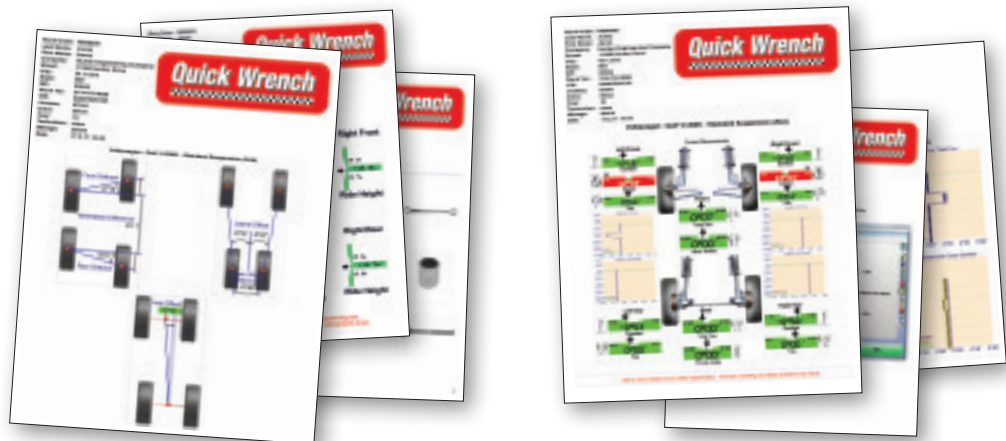


### WinAlign Tuner\*

Perform alignments on tuned suspensions and other modified vehicles with tools to monitor tire wear and handling.

## Fast printouts to share with customers

Customize Hunter's detailed printouts to help explain service needs to customers or to document repairs.



\* Optional

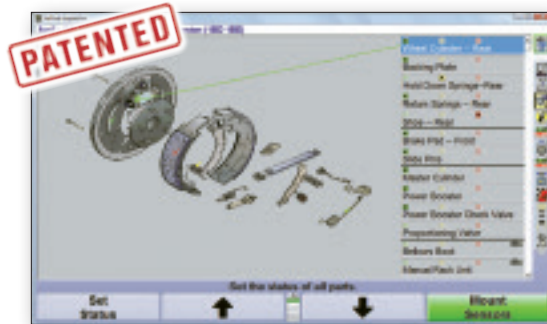
# Help your customers make informed decisions!



## WinAlign® Video Library\*

400+ videos cover all aspects of wheel alignment today.

- ✓ Educate your customers
- ✓ Find answers to unusual problems
- ✓ Extend your service and profit opportunities
- ✓ Strengthen technician competency



## Point & Click Inspection Photos\*\*

5,000+ vehicle-specific photos and illustrations to assist your shop.

- ✓ Show your customers their hidden repair needs
- ✓ Guide your technicians to the proper inspection points
- ✓ Extend your service and profit opportunities



## The latest specs available online

Download, access and communicate alignment service information through the Internet.

- ✓ WebSpecs®.NET specification database
- ✓ ShopResults.NET® online service\*
- ✓ UnderCarInfo.NET subscription\*



## WinAlign® printouts help sell work

Explain needed parts and repairs and show completed work to customers using detailed, color-coded printouts.

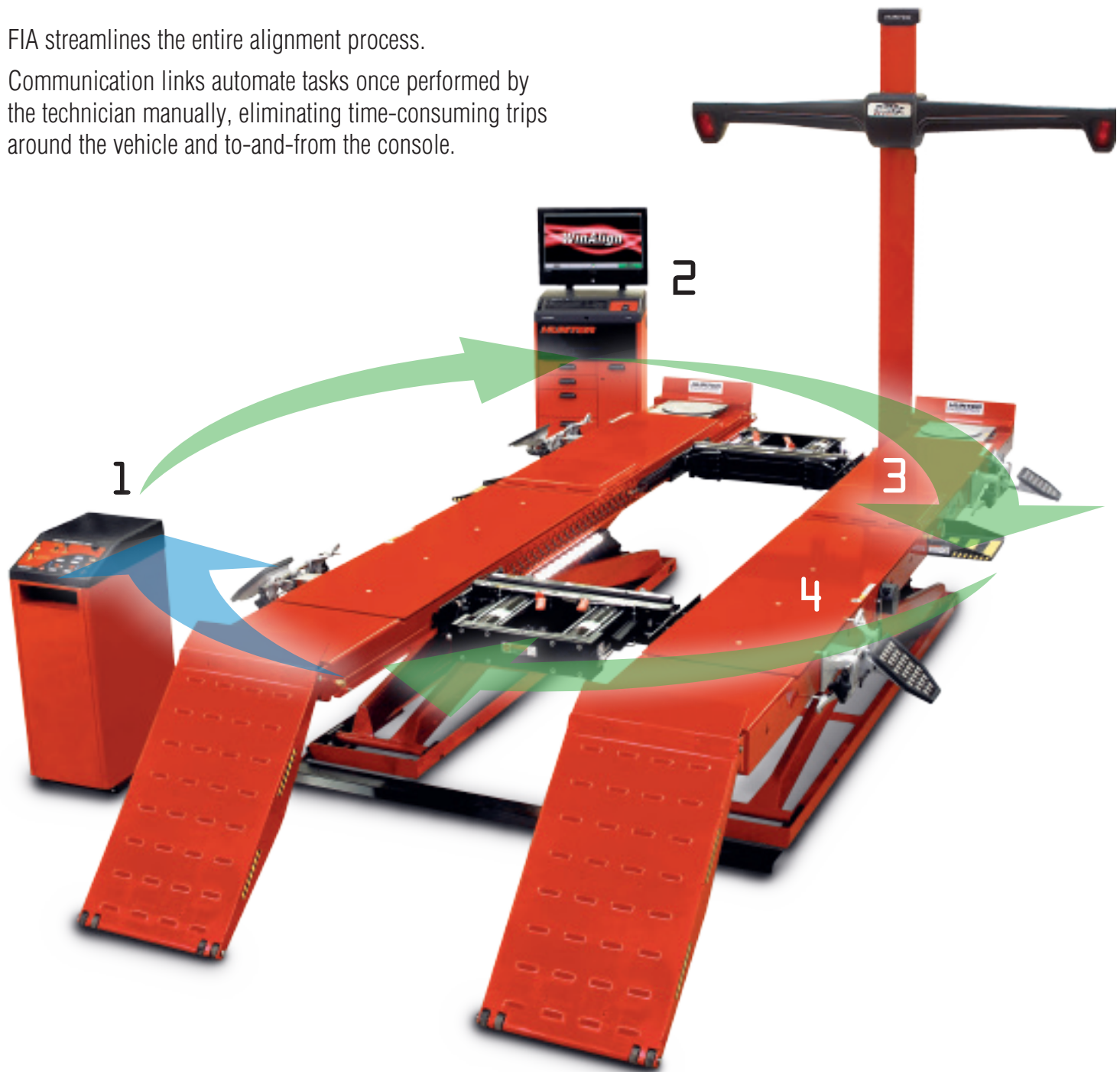
- H Clear and detailed printouts help you communicate and build rapport with your customers and sell more alignments.**

# FIA Fully Integrated Alignment



FIA streamlines the entire alignment process.

Communication links automate tasks once performed by the technician manually, eliminating time-consuming trips around the vehicle and to-and-from the console.



**PATENTED**

1



### RX Scissor Lift console

- ✓ Raising the vehicle triggers the sensors to look for wheel targets
- ✓ Control PowerSlide® and Inflation settings on the lift console



**H** *Optional AlignLights turn on automatically at alignment height*

**PATENTED**

2



### WinAlign® console

- ✓ Centralized control of entire system
- ✓ Communicate directly with lift to set tire pressure and automatically operate turnplates and slipplates
- ✓ Guide the technician through the alignment process



**H** *Measurements are taken automatically after fourth target is installed*

**PATENTED**

3



### PowerSlide® system

- ✓ Slipplates and turnplates automatically lock and unlock at appropriate times
- ✓ No more struggles with lock pins



**H** *Auto-locking turnplates and slipplates save trips around the vehicle*

**PATENTED**

4



### Inflation Station

- ✓ Automatically inflate all four tires simultaneously
- ✓ Record starting and final pressure
- ✓ Hose recoils to keep work area clear



**H** *Software tracks before and after tire pressures for the customer's printout*

# Choose the right sensor package for your shop!



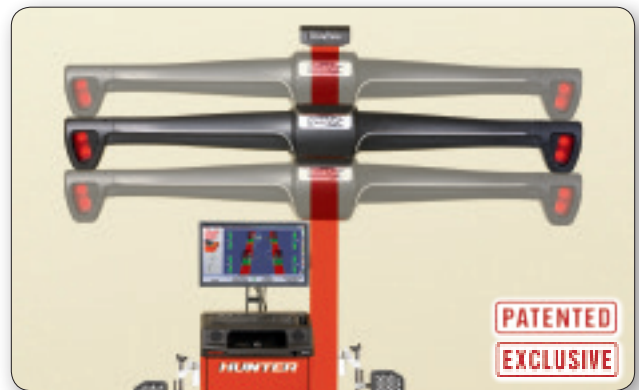
Fixed-column configurations fit most service bay applications.



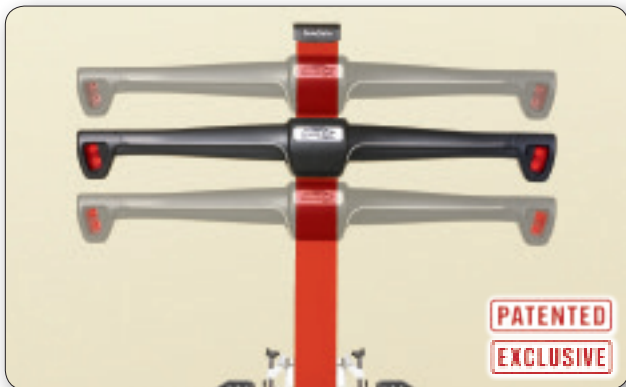
Lift-column configurations automatically position the cameras to any lift height during the alignment process.



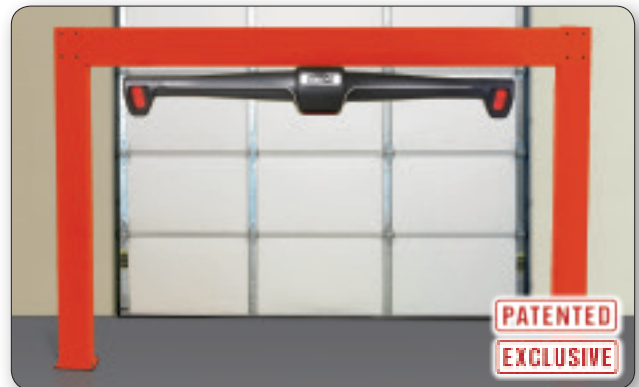
Wall- and ceiling-mount configurations are perfect when space is at a premium.



Cabinet-mounted configuration is mobile to service multiple alignment bays and provides a full range of travel for additional lift height.

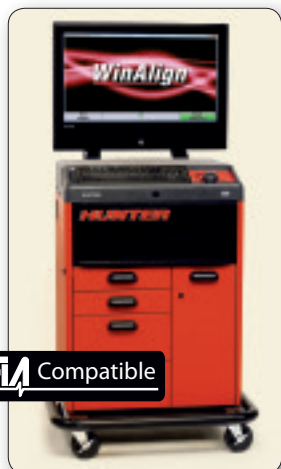


Manually operated vertical camera configuration provides a full range of travel for additional lift height.



Floor-mounted overhead configurations are ideal for drive-through bays or to accommodate unique applications.

# WinAlign Cabinet Configurations and Technical Specifications



## WA440E

Large premium cabinet shown with optional 32-in. (813 mm) widescreen LCD monitor.

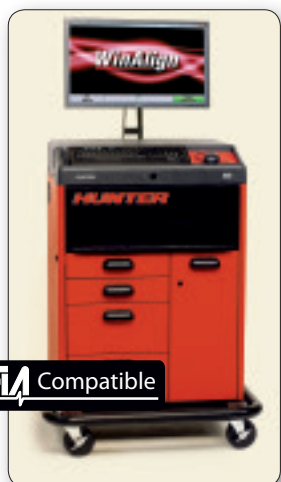
Approximate dimensions:  
72-in. H X 35-in. W X  
29-in. D (1829 mm H X  
889 mm W X 737 mm D)  
(with monitor).



## WA440E

Large premium cabinet shown with optional 26-in. (660 mm) widescreen LCD monitor.

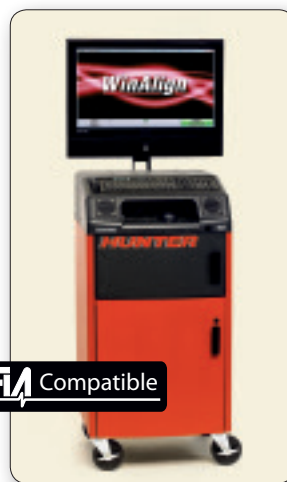
Approximate dimensions:  
71-in. H X 35-in. W X  
29-in. D (1803 mm H X  
889 mm W X 737 mm D)  
(with monitor).



## WA440E

Large premium cabinet shown with optional 24-in (609 mm) widescreen LCD monitor.

Approximate dimensions:  
70-in. H X 35-in. W X  
29-in. D (1708 mm H X  
889 mm W X 737 mm D)  
(with monitor).



## WA430E

Compact premium cabinet shown with optional 26-in. (660 mm) widescreen LCD monitor.

Approximate dimensions:  
71-in. H X 26-in. W X  
23-in. D (1803 mm H X  
660 mm W X 584 mm D)  
(with monitor).



## WA430E

Compact premium cabinet shown with optional 20-in. (508 mm) widescreen LCD monitor.

Approximate dimensions:  
71-in. H X 26-in. W X  
23-in. D (1803 mm H X  
660 mm W X 584 mm D)  
(with monitor).

### PC Specifications

- ✓ 3.06 GHz Intel® Core i3
- ✓ 4 GB DD3 SDRAM
- ✓ 250 GB SATA Hard Drive

- ✓ DVD-RW/CD-RW Optical Drive
- ✓ USB 2.0 (2 Front Side USB Ports)
- ✓ Windows® 7

- ✓ Network Module
- ✓ Certified iShop compliant
- ✓ Certified ASANET compliant

- ✓ WinAlign® software
- ✓ 2 years free VID update

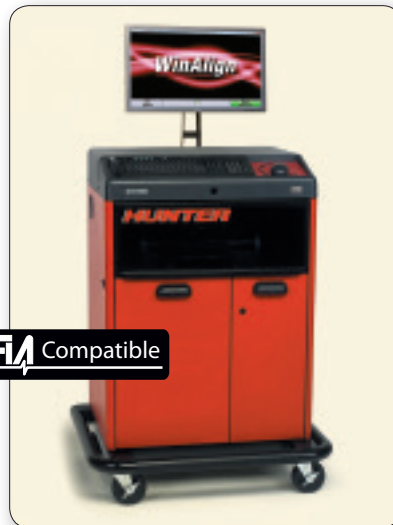
# WinAlign Cabinet Configurations and Technical Specifications



**FI** Compatible

## WA340E

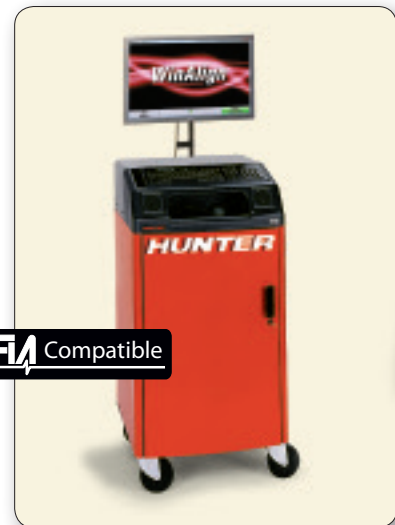
Large cabinet shown with optional 24-in. (609 mm) widescreen LCD flat panel monitor. Approximate dimensions: 70-in. H X 35-in. W X 29-in. D (1778 mm H X 889 mm W X 737 mm D) (with monitor).



**FI** Compatible

## WA340E

Large cabinet shown with optional 22-in. (558 mm) widescreen LCD flat panel monitor. Approximate dimensions: 69-in. H X 35-in. W X 29-in. D (1753 mm H X 889 mm W X 737 mm D) (with monitor).



**FI** Compatible

## WA330E

Compact cabinet shown with optional 24-in. (609 mm) widescreen LCD flat panel monitor. Approximate dimensions: 70-in. H X 26-in. W X 23-in. D (1778 mm H X 660 mm W X 584 mm D) (with monitor).



**FI** Compatible

## WA310E

Compact cabinet shown with optional 22-in. (558 mm) widescreen LCD flat panel monitor. Approximate dimensions: 69-in. H X 26-in. W X 23-in. D (1753 mm H X 660 mm W X 584 mm D) (with monitor).



**FI** Compatible

## WA320E

Column/wall-mounted cabinet shown with optional 24-in. (609 mm) widescreen LCD flat panel monitor. Approximate dimensions: 42-1/2-in. H X 30-1/2-in. W X 24-in. D (1080 mm H X 775 mm W X 610 mm D) (with monitor).

## PC Specifications

- ✓ 3.06 GHz Intel® Core i3
- ✓ 4 GB DD3 SD RAM
- ✓ 250 GB SATA Hard Drive
- ✓ DVD-RW/CD-RW Optical Drive
- ✓ USB 2.0 (2 Front Side USB Ports)
- ✓ Windows® 7
- ✓ Network Module
- ✓ Certified iShop compliant
- ✓ Certified ASANET compliant
- ✓ WinAlign® software
- ✓ 2 years free VID update

For detailed information on models, cabinets and accessories, contact your Hunter representative.

WinAlign® software upgrades may require additional and/or upgraded hardware. Because of continuing technological advancements, specifications, models and options are subject to change without notice.

**HUNTER**  
Engineering Company

[www.hunter.com](http://www.hunter.com)

11250 Hunter Drive, Bridgeton, MO 63044 USA  
Tel: +1 314-731-3020 Fax: +1 314-731-0132  
Email: international@hunter.com